

## Aelita Garden Resort residential complex

Location **Kyrenia, Esentepe**



### About the project

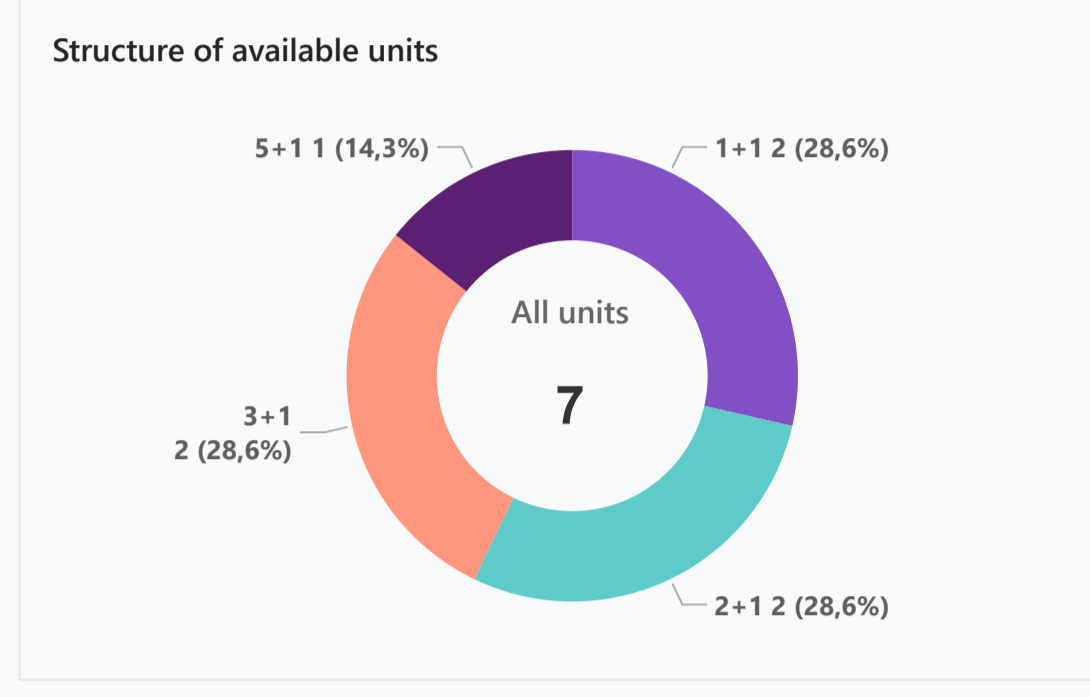
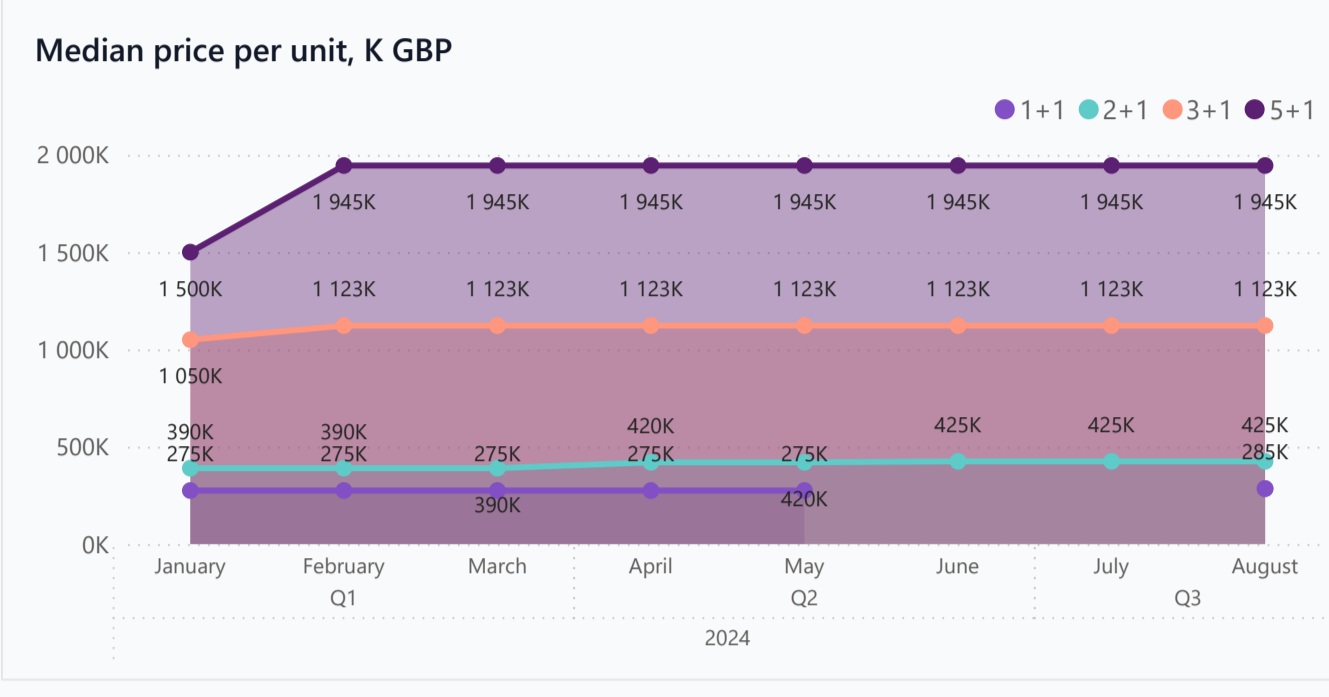
**Developer** Kayim Development Group  
**Start of sale** 2022  
**Key handover** 2024  
**Houses/blocks** 8  
**Building floor** 1 Min 2 Max  
**Units total** 12 - 1+1, 2 - 2+1, 2 - 3+1 Villas, 3 - 4+1  
 Distance to the sea - 100 m  
 Distance to key locations:  
 30 minutes drive from Kyrenia city and 45 minutes drive from Ercan Airport.

Aelita garden resort is located on the high cliffs of the Mediterranean coast in Esentepe. All villas and apartments have direct views of the sea and mountains. For golf lovers, the prestigious Korineum Golf Club is nearby. Aelita Garden Resort embodies elegance, tranquility and privacy.

### Complex infrastructure

- BBQ area ✔
- Central generator ✔
- Central heating System ✔
- Kid's playground ✔
- Open pool ✔
- Parking ✔
- Tennis court ✔

### Available units 7 / 23 total



### Plans



### Payment plans

Deposit (non-refundable) 2000 GBP for 2 weeks

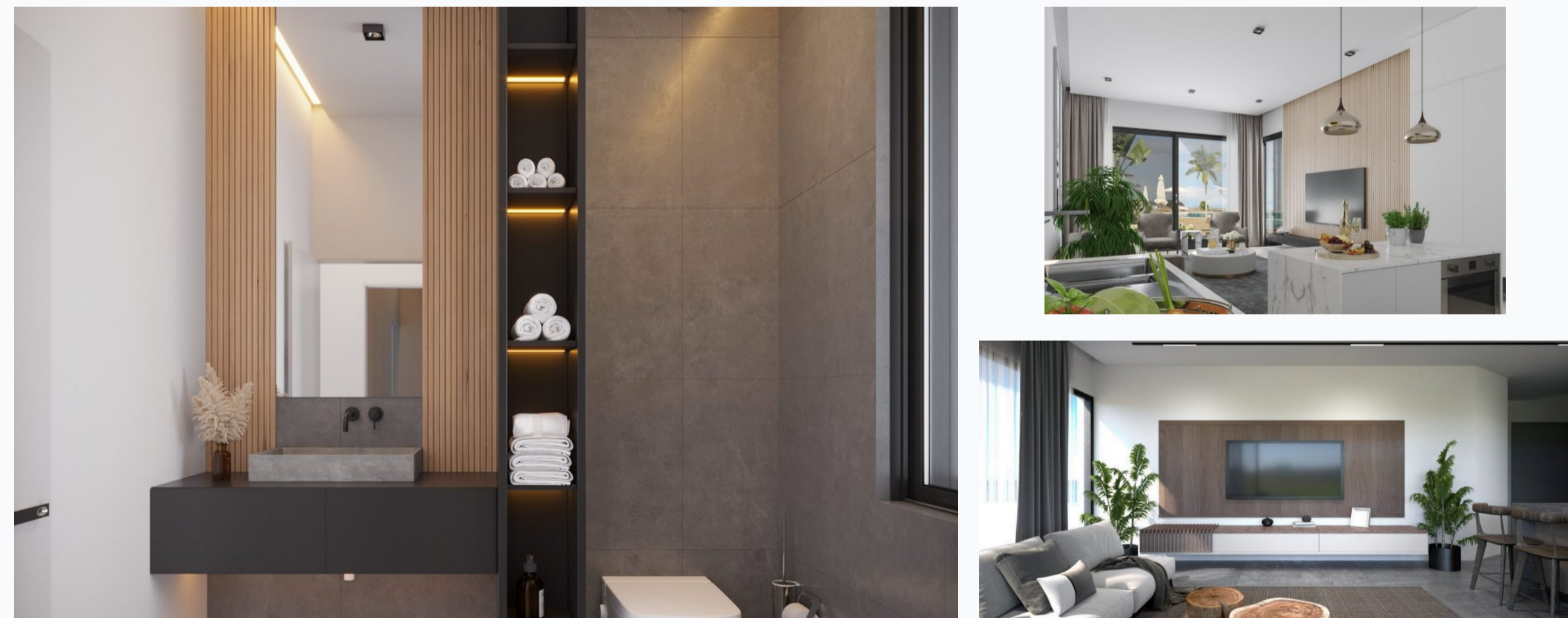
Option	Down payment	Installments months	Discount	Offer
Option 1	50%	50% till key	-	-
Option 2	-	-	-	-
Option 3	-	-	-	-
Option 4	-	-	-	-

- Special offer**
- Fully furnished design package
  - Rental guarantee
- Trafo 2500 GBP    Resale after 50%    Maintenance fee -    Rental services -

### Details

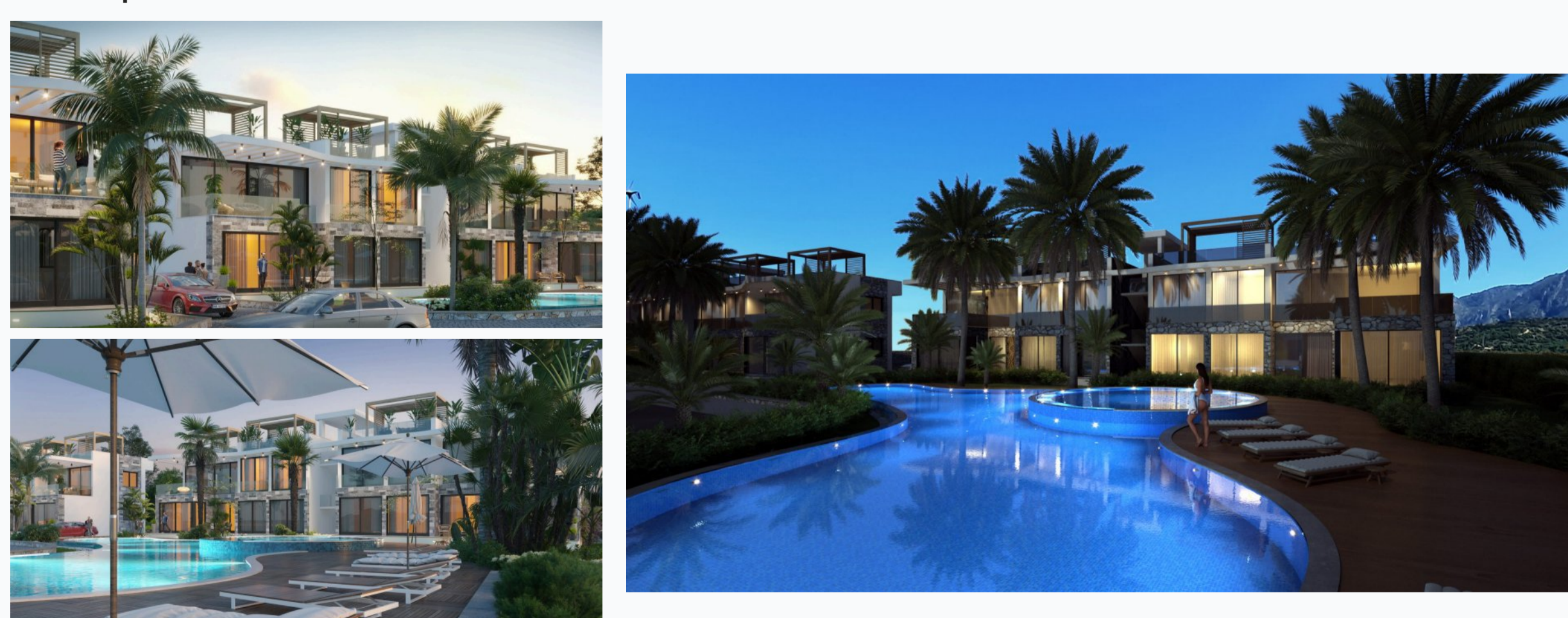
Bedrooms	Subtype	Block	Unit №	Floor	View	Bathroom	Internal area, sq. m	Balcony/ Terrace, sq. m	Rooftop terrace, sq. m	Garden, sq. m	Gross covered area, sq. m	Current price, GBP	Price per sqm, GBP
1+1	Flat	Kristina	G-3	0			50	8	23		81	285 000	3 519
1+1	Flat	Sara	G-4	0			64	15	18		97	285 000	2 938
2+1	Flat	Maria	P-3	01			85	12	35		132	425 000	3 220
2+1	Flat	Maria	P-4	01			85	12	35		132	425 000	3 220
3+1	Bungalow	Bungalow	3	0			125	15	125		265	1 050 000	3 962
3+1	Villa	Villas	Karin	0			140	10	50		200	1 195 000	5 975
5+1	Bungalow	Bungalow	2	0			250	15	125		265	1 945 000	7 340

### Interior specification



- Interior specification**
- Ceramic flooring ✔
  - Double glazed windows ✔
  - Laminate flooring in the bedrooms ✔
  - Steel ladder with wood step ✔
  - Toilet integrated in the walls ✔
  - Underfloor heating in bathrooms ✔

### Exterior specification



- Exterior specification**
- BBQ place on the roof ✔
  - Glass fence balcony ✔
  - Private pool ✔
  - Terracing with inbuilt lighting & power sockets ✔

### Location of complex

